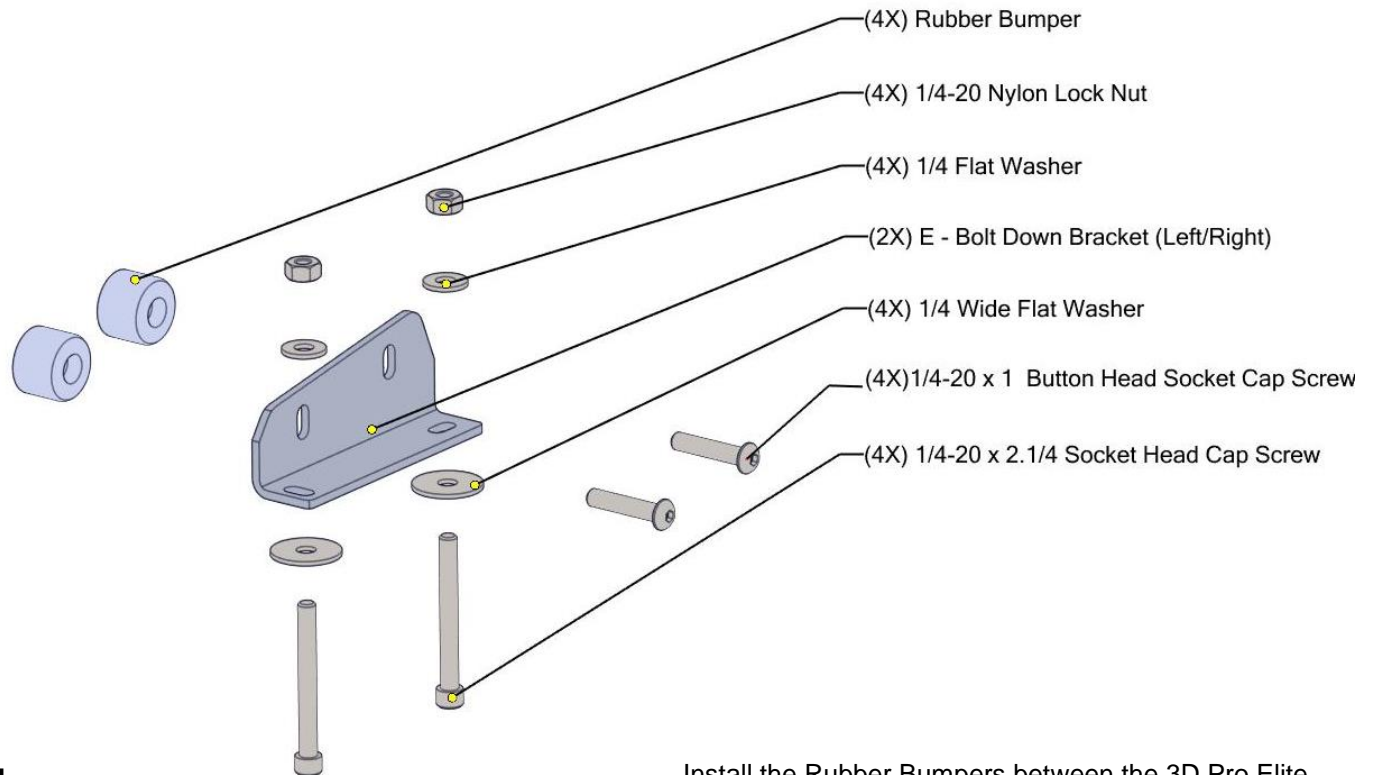




3D Elite - Bolt Down Kit

Installation Instructions

This kit contains the following parts :



Step 1

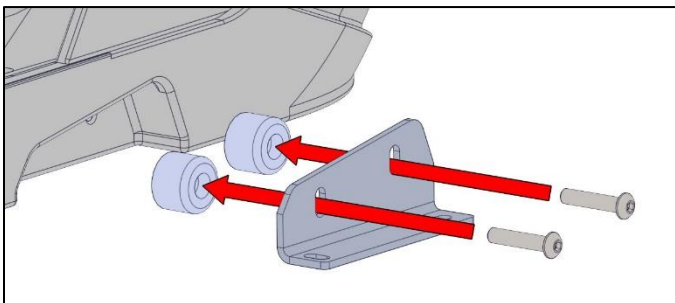


Figure 1.1

Install the Rubber Bumpers between the 3D Pro Elite and the Bolt Down Bracket Left/Right using two of the 1/4"-20 x 1" Button Head Socket Cap Screws. (See Figure 1.1 and 1.2)

Adjust each Bolt Down Bracket until both are flat against the work surface the 3D Pro Elite is being attached to before fully tightening the 1/4"-20 x 1" Button Head Socket Cap Screws.

Once Bolt Down Brackets are flat against the work surface and tightly secured to the 3D Pro Elite, mark the locations of the slots on the work surface.

Remove the 3D Pro Elite from the work surface.

Using a 1/4" drill bit, drill through the work surface at the center of each slot.

Realign the 3D Pro Elite Bolt Down Brackets with the holes and proceed to Step 2.

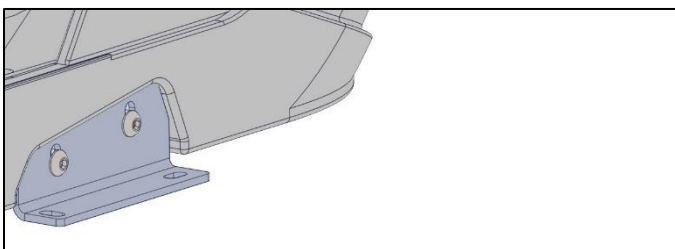
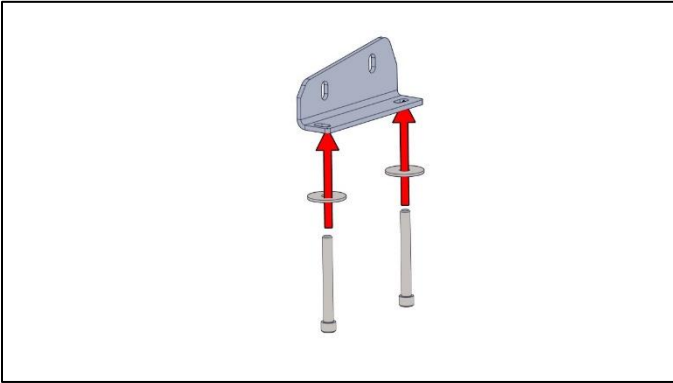


Figure 1.2

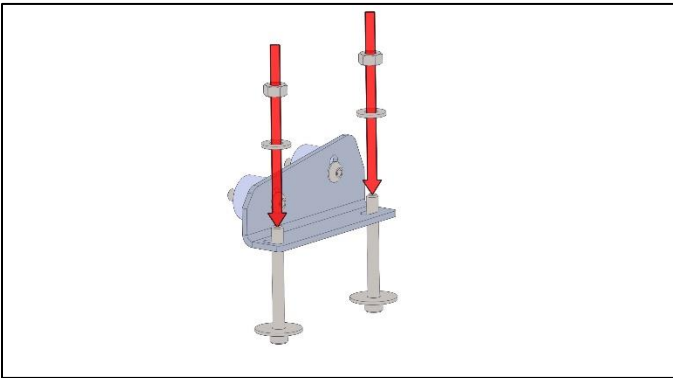
Step 2



From the underside of your work surface, insert the 1/4"-20 x 2.1/4" Socket Head Cap Screws through 1/4" Wide Flat Washers, then through the holes drilled previously. (See Figure 2.1)

(Note: If your work surface is thicker than 1.3/4", you may need to purchase 1/4" machine screws longer than the 1/4"-20 x 2.1/4" Socket Head Cap Screws)

Figure 2.1

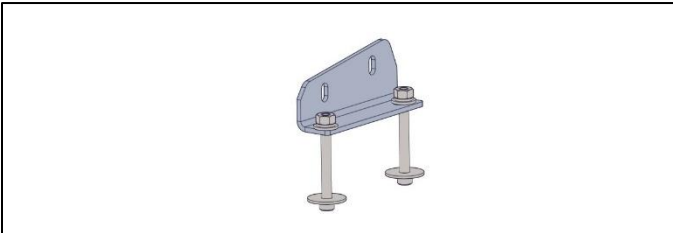


Once the threading of the 1/4"-20 x 2.1/4" Socket Head Cap Screw is exposed through the top of your work surface, place the 1/4" Washer on the screw.

Tighten the 1/4" Nut over both washers onto the 1/4"-20 x 2.1/4" Socket Head Cap Screw.

(See Figure 2.2)

Figure 2.2



Repeat these Step 2 for all 4 of the 1/4"-20 x 2.1/4" Socket Head Cap Screws.

Each side should appear similar to Figure 2.3.

Figure 2.3